

# Partnerships and Business Models

Access to High-Resolution Geodata in a Collaborative Approach

Dr. Simon Musaeus, Hexagon GCS

We rely on the unique contributions that each of our businesses add to the whole.

## Manufacturing Intelligence

Converging design and engineering, production, and metrology solutions to enable smart factories for digital transformation.



## PPM

Transforming unorganized information into smart digital assets to visualise, build, and manage structures and facilities.



## Mining

Solving the toughest surface and underground challenges with proven technologies for planning operations, and safety.



## Agriculture

Enabling better planning, efficient execution, precise machine controls, and automated workflows with advanced technologies.



## Autonomy & Positioning

Pioneering end-to-end solutions for assured positioning and correction for land, sea, and air.



## Geospatial

Delivering 5D smart digital worlds with location intelligence that conveys what was, is, could be, should be, and what will be.



## Safety & Infrastructure

Improving the performance, efficiency, and resilience of vital services with software solutions for smart and safe cities.



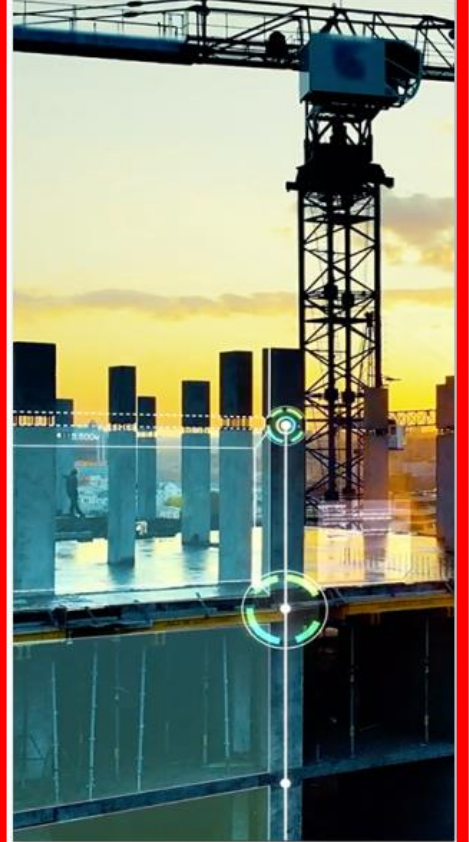
## Xalt Solutions

Accelerating digital transformation by solving workplace challenges with the industry's most agile framework.



## Geosystems

Creating smart digital realities from different views with powerful technologies that capture, measure, and visualise data.





# Hexagon Geospatial Content Solutions (GCS)



## Hexagon Content

- Image-based (Orthophotos, Oblique)
- 3D terrain (DSM, DTM, 3D-Mesh, point clouds)
- Derived layers
- Partner-based

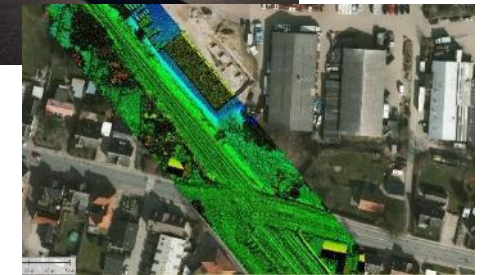


## Airborne Sensors

- ContentMapper
- DMC-4
- ADS100
- CityMapper 2
- SPL100
- TerrainMapper-2

## Services

- Data-capture
- Image processing
- Lidar processing
- Cooperation with Hexagon customers
- Strategic Projects



Requires disruptive approaches to maintain manageability and livability of urban mega-spaces



Urbanization

A climate crisis is threatening with increasing strength with wildfires, droughts, floods, and other weather anomalies



Climate Change

## Megatrends



Globalization

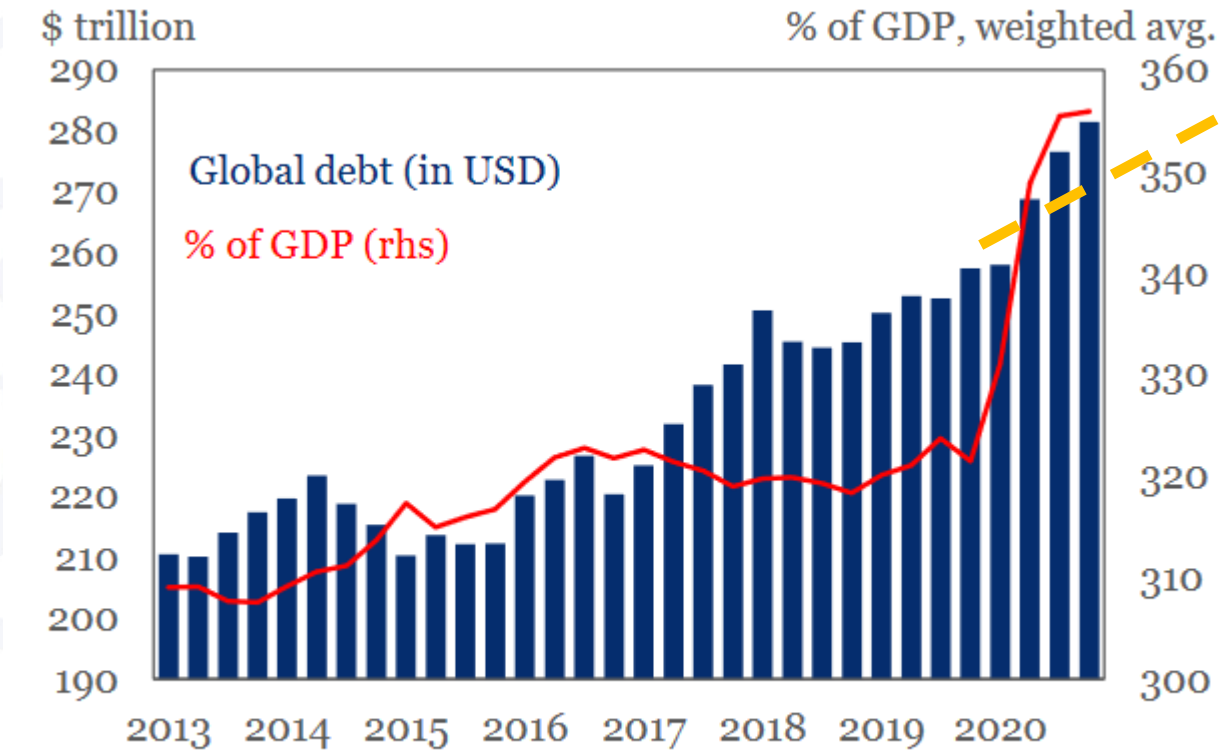
Geopolitical shifts are rapidly changing the relations between major actors



Automation

Artificial intelligence is outpacing human productivity and acting as creative entity on its own

# Borrowing from the Future

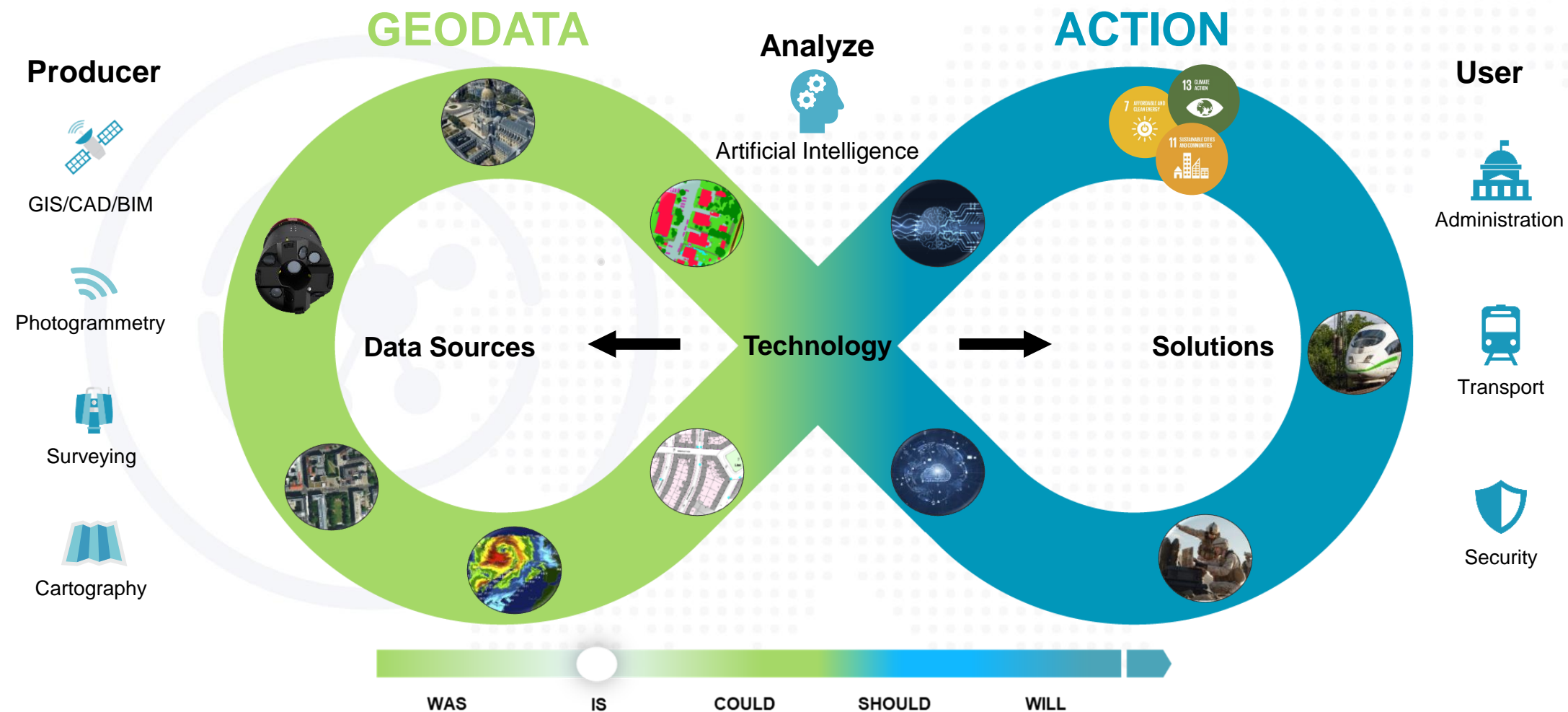


Source: IIF, BIS, IMF, National sources

**Should the Geospatial Industry still rely on traditional contracts?**

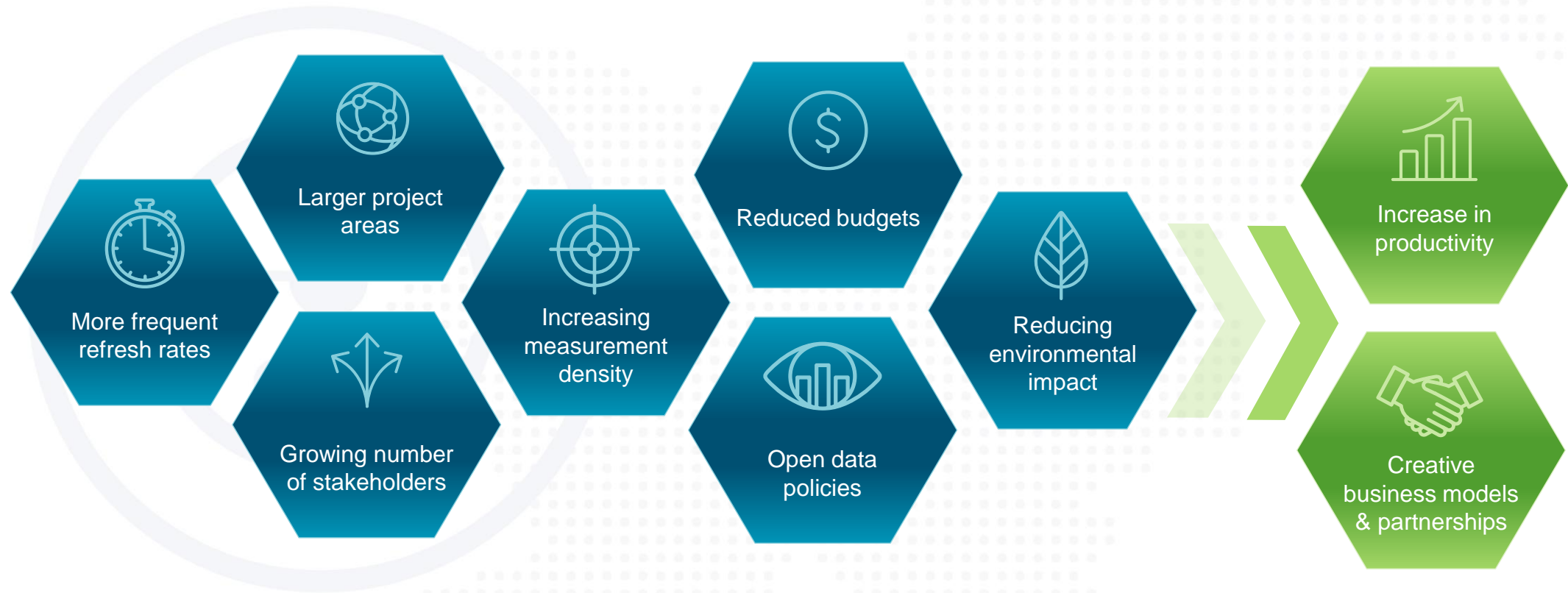
**How long can Public Users still rely on availability of budgets?**

# Digital Twins

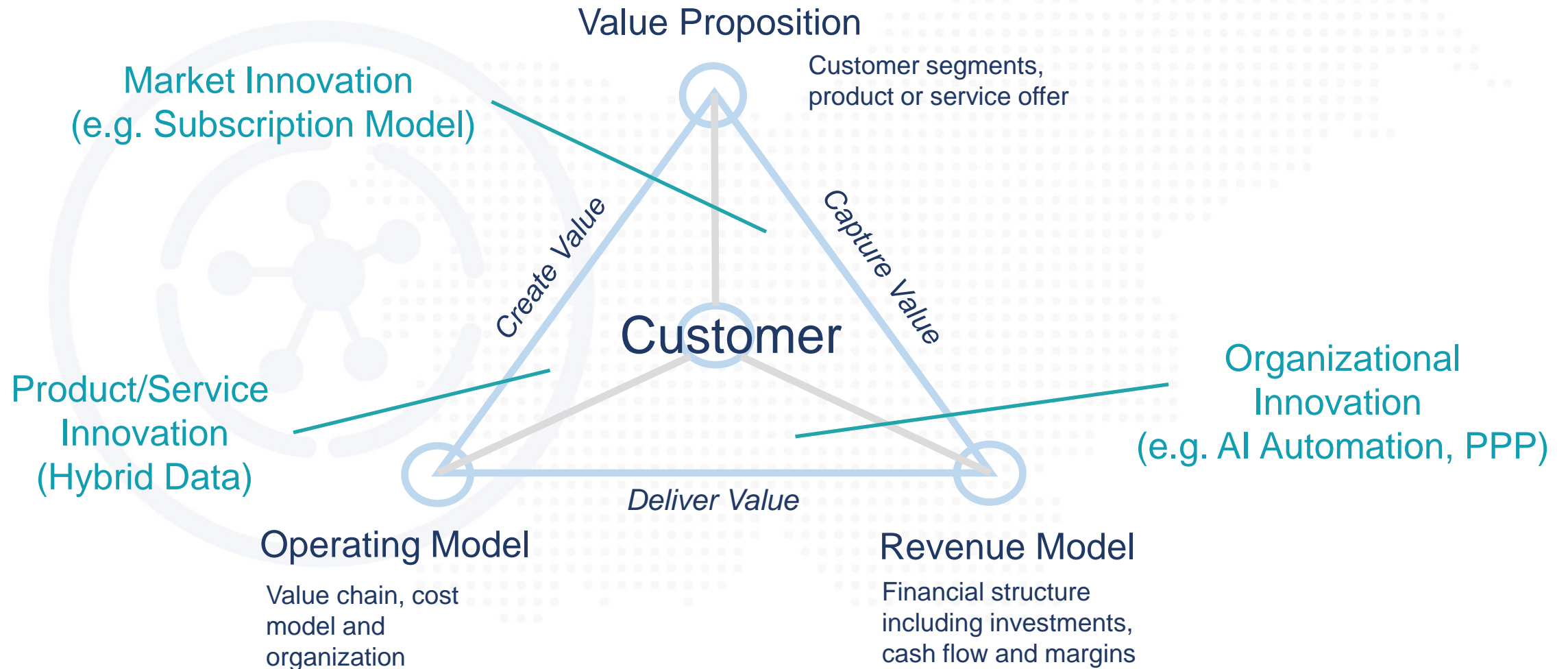




# Industry Trends – Base data



# Business model innovation





# PPP models

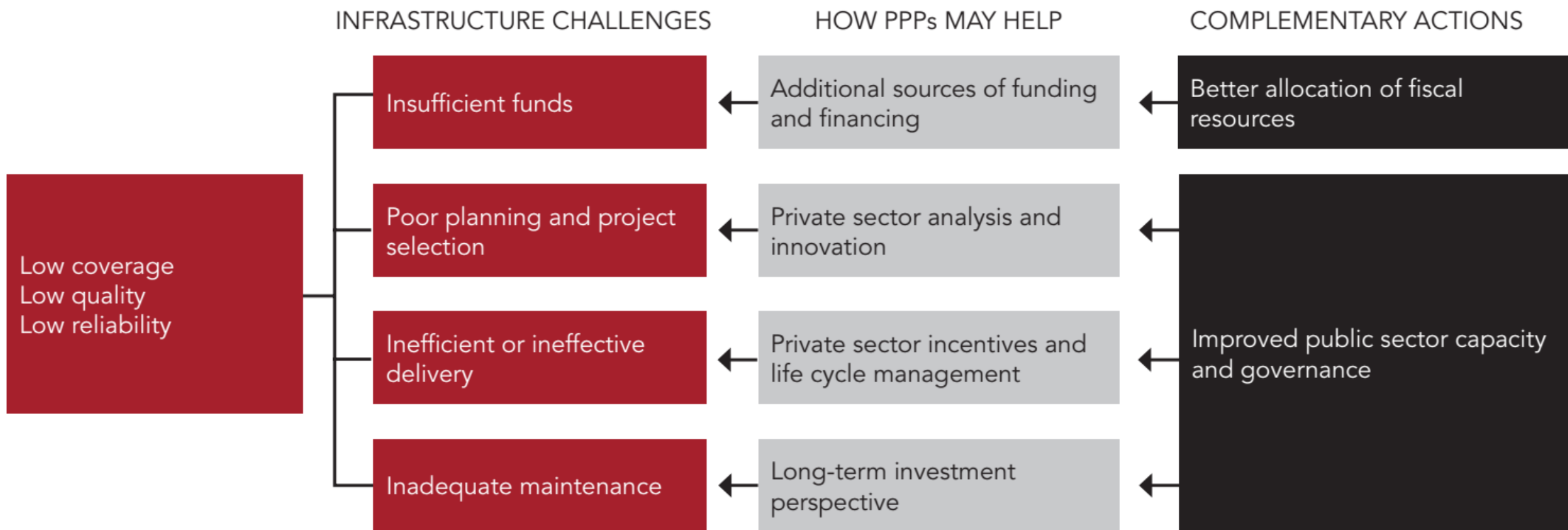
The World Bank PPP Knowledge Lab<sup>1</sup> defines a PPP as:

*“a long-term contract between a private party and a government entity, for providing a public asset or service, in which the private party bears significant risk and management responsibility, and remuneration is linked to performance.”*



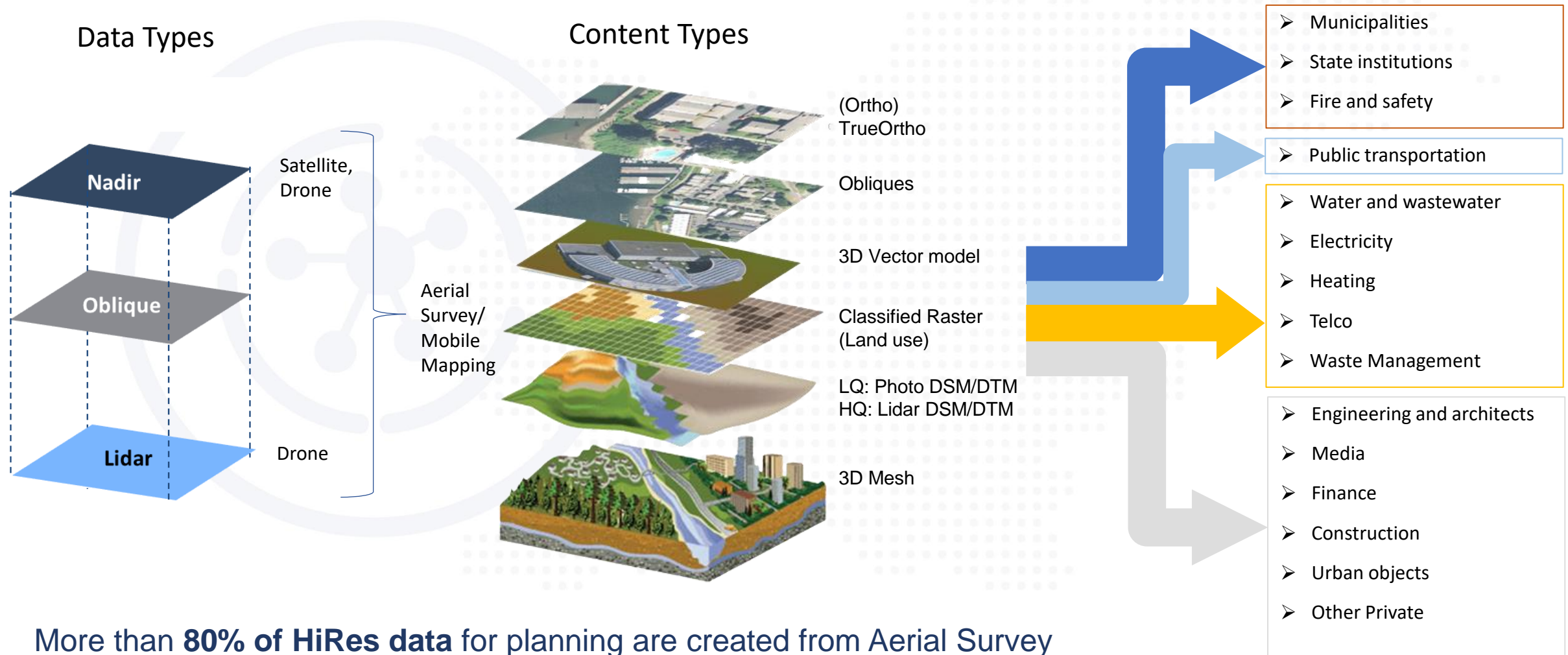
Allocate the risk to the party that can best handle it.

# Challenges and how PPP can help



Source: World Bank 2020

# Sources and use of Geodata in our World today



More than **80% of HiRes data** for planning are created from Aerial Survey



# Business elements - Geodata



## Design

- Requirements
- General Standards



## Data Procurement (Build)

- Own production
- Service contract (obtention of all generated products incl. intermediate)
- Defined Data Product procurement
- License (perpetual, temporal, restricted/unrestricted)



## Ownership/Control

- IPR with NMCA
- Shared IPR with Business
- No IPR



## Funding/Financing

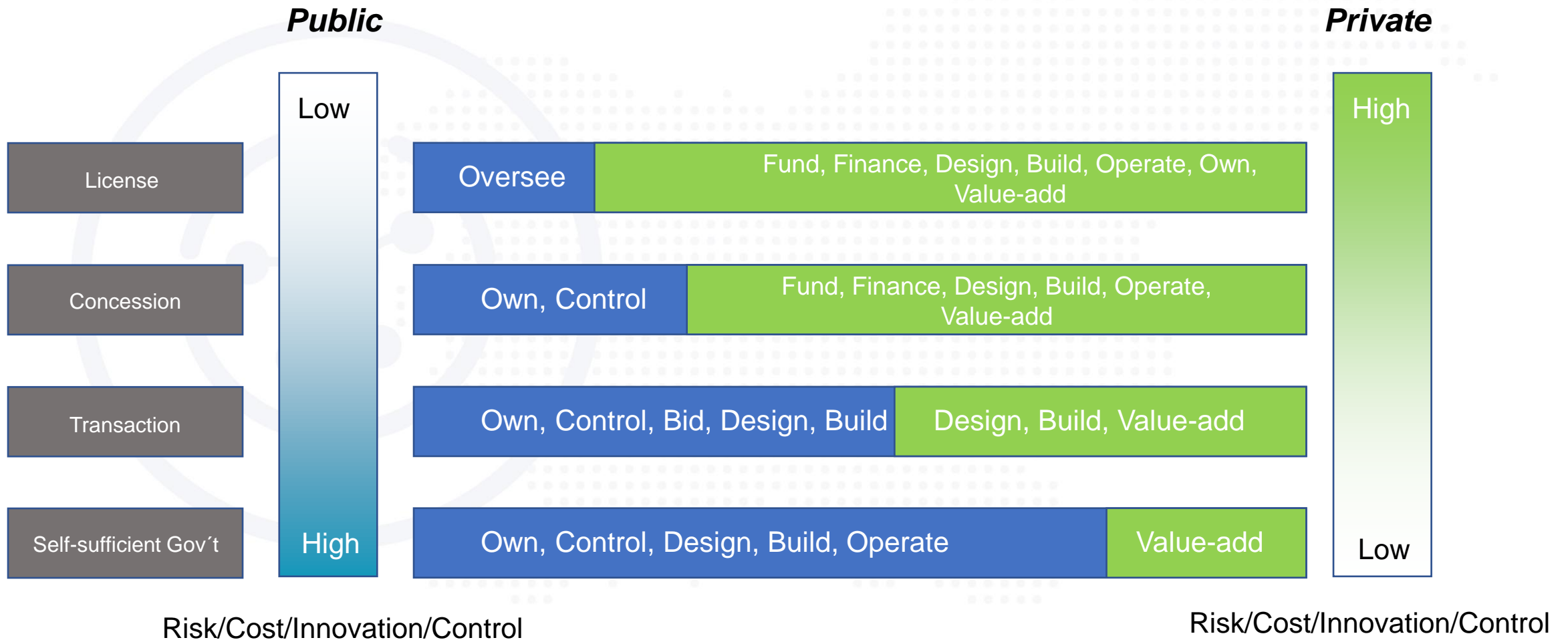
- 100% governmental budgets
- Co-financing with private business
- Debt-financing (Bank)
- Full private funding/financing
- Commercialization
- Channels
- Pricing structure



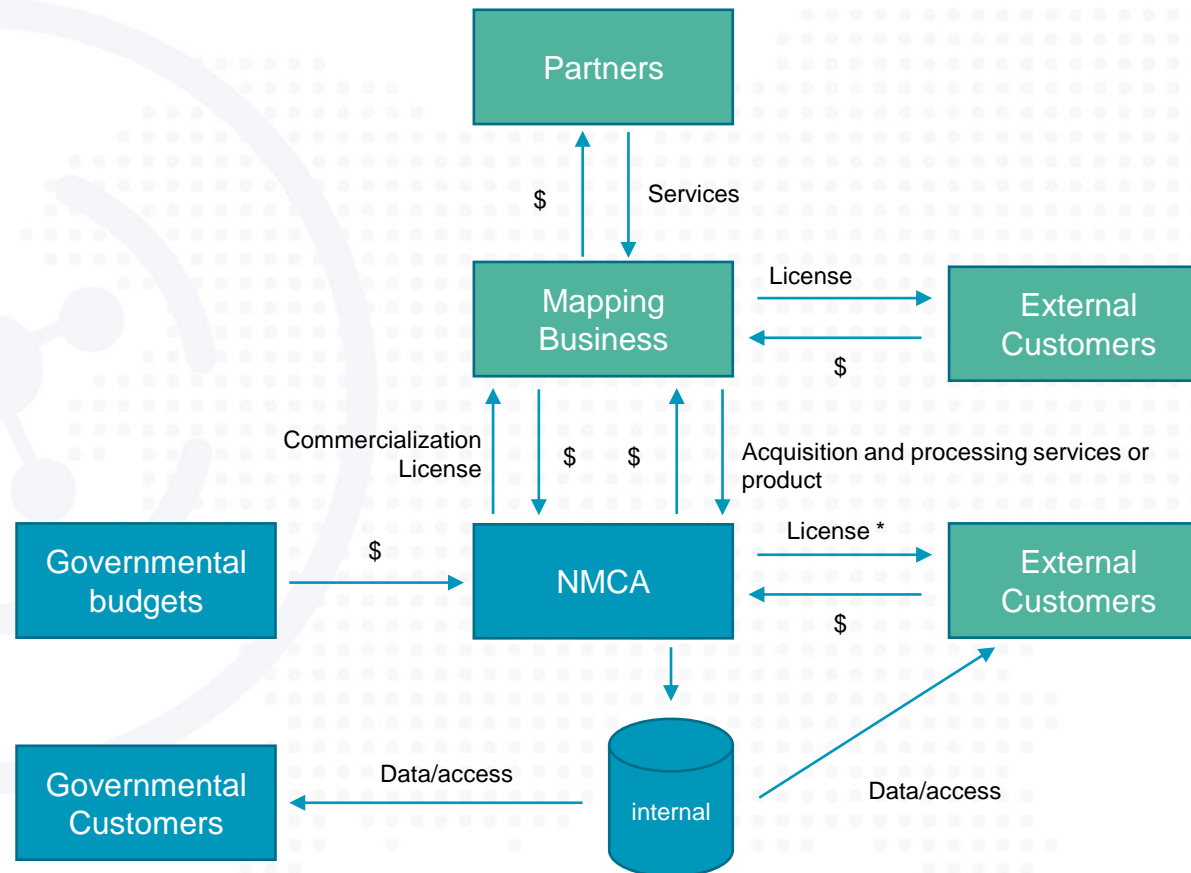
## Maintenance/Operation

- Storage
- Access interfaces and methods
- Rules/Regulations

# PPP models for base data



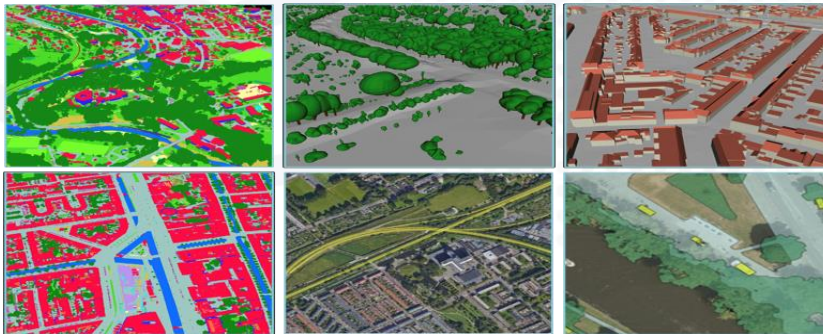
# Business Model – Concession (Through back-licensing)



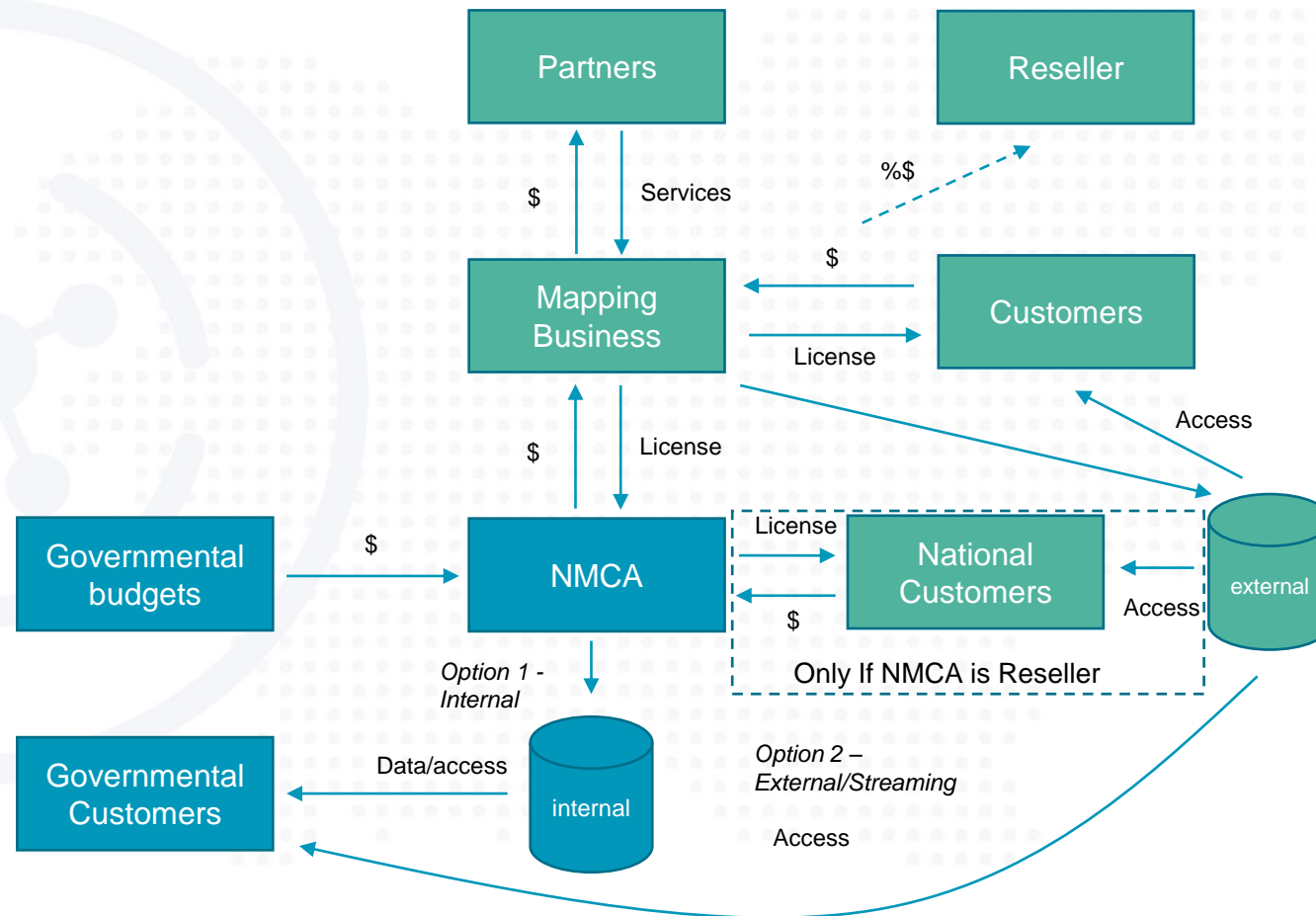


# Multi – purpose, high resolution, hybrid City Data – Munich, Germany

- First fully hybrid data set for a City in Germany – part of CUT
- Complete, synchronous acquisition of aerial survey data types Nadir, Oblique, and Lidar
- Application for any type of public and private data user
  - Demand has been stated by most German cities for public and private uses
  - Creation of a coherent dataset for spatial based decisions



# Business Model – License and Resales – IPR with Company





# Digital Surface Model Germany – Hexagon Content

- Federal Authority for Cartography and Geodesy
- First homogeneous and high-resolution DEM Geospatial data set of Germany
- Homogeneity relevant for transborder planning (federal and European)
- Industrial applications
- Data set for the BKG as central Data provider
  - Need stated by various Federal authorities, e.g. Disaster management, Crisis preparedness and Air Traffic Control.



Bundesamt für  
Kartographie und Geodäsie



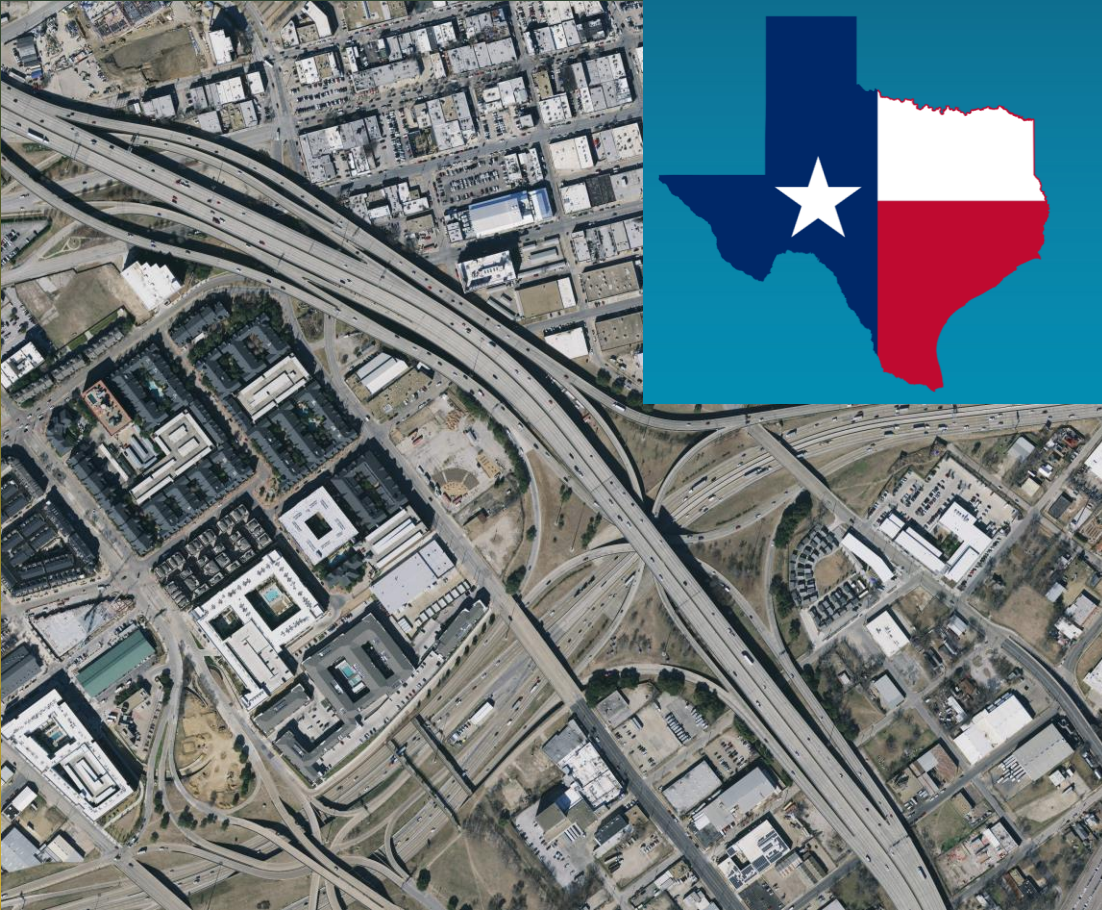
Bundesamt  
für Bevölkerungsschutz  
und Katastrophenhilfe



DFS Deutsche Flugsicherung



# State of Texas – 15 cm state-wide program- Hexagon Content



The Texas Natural Resources Information System (TNRIS) selected the HxGN Content Program's 15 cm statewide data.

Texas benefits from more frequent refreshes and higher resolutions for their state imagery program. The data has higher horizontal accuracy due to more rigorous orthorectification and ground control.

The state received immediate access to the imagery and enjoys flexible data sharing options under a licensed product agreement.



# Hexagon Content Program

## Data Products and Features



Ground Controlled



Consistent Sensor  
Tech & Flight Plans



Photogrammetric  
Quality Standards



4-Band Data  
(RGBN)

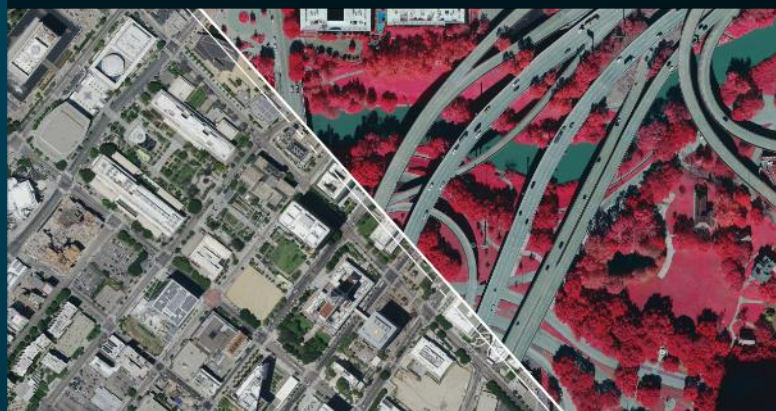


Machine Learning  
Ready



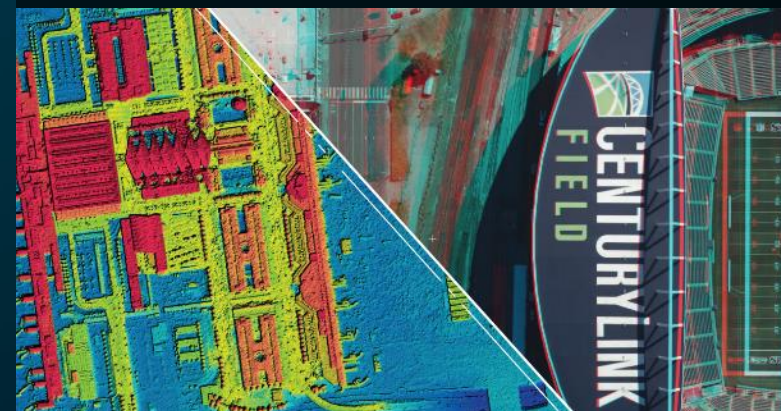
Cloud Hosted (AWS)

### Orthophotos (4-band)



- 15 cm GSD wide area coverage
- 5-7.5 cm GSD urban area coverage
- Available for streaming & download
- Ideal as a land base for GIS applications

### Elevation Products & Stereo Imagery



- DSM and Stereo imagery available for 15 cm GSD data
- Broad coverage of the US and Europe
- Ideal to extract 3D vector maps and clutter

# DMC-4 Airborne Camera

Precise, Productive, Flexible

- Precise images
  - Only product with CMOS + FMC
- High productivity
  - Unmatched 4-band, 31,520 cross-track pixel count
- Flexible
  - 58° and 45° FOV configurations cover varying GSD and flying heights
  - Fast 0.8-second frame interval for forward overlap and aircraft speed freedom
  - Frame format supports conventional aerial photo workflows and stereo feature collection as well as automated infocloud, DSM and true-ortho generation





# 8 Years of Continuous Data Collection

2014



Start of U.S. data program at 30cm resolution

11 states captured in the first season including Texas and California

2015



20 new states captured in the U.S.



Start of European data program at 30 cm resolution

Italy, Portugal, Denmark and most of Spain Captured in the first year

2016



Start of U.S. urban program at 15 cm resolution. Captured all cities in U.S. above 50k population, making this the largest urban data acquisition year to date with 225 cities collected.

A total area of 311,11.81 km<sup>2</sup> were captured

2017



First cycle of continental coverage in the U.S. completed and 20 states refreshed.

2018



Our biggest year in the history. Refreshed half the continental U.S. and a third of European coverage region in one season.

A total of 5,123,779.86 km<sup>2</sup> were captured.



Availability of the data through GSA schedule

2019



Content hosting migrated to AWS in both North America and Europe



Through partnerships, we offer 300,000 km<sup>2</sup> of oblique, 3D and LiDAR data in the U.S.



16th year of continuous collection for NAIP, now at 60 cm resolution

2020



Start of 3<sup>rd</sup> U.S. refresh

6 states refreshed, including Texas at 15 cm statewide



Completion of European coverage area

2021



16 states to be refreshed in the U.S.



Start of European city program at 5 cm resolution

2022



9 states to be refreshed in the U.S.

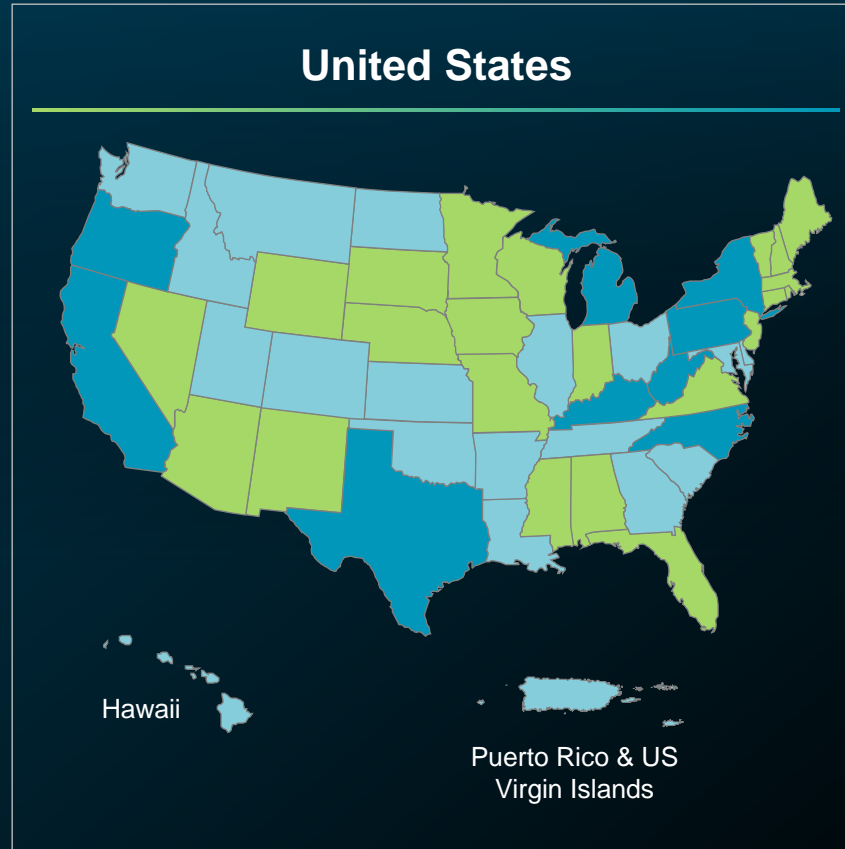
## Extensive data coverage

# 100%

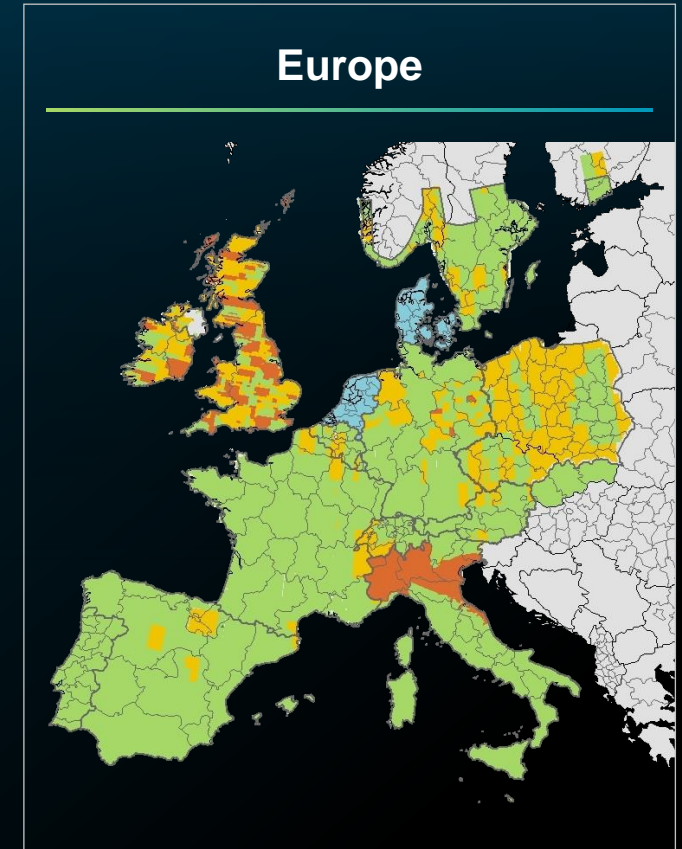
complete coverage of the contiguous United States and Western Europe

# 27 million+ km<sup>2</sup>

of aerial data captured since the program's launch in 2014



- 2022 Anticipated Collection
- 2021 Updated Coverage
- Existing Coverage
- Partner Program



- 2022 Anticipated Collection
- 2021 Updated Coverage
- 2020 Updated Coverage
- Existing Coverage

# Hexagon Content Program Ecosystem

## FLEET



## DATA

**600+ TB**  
raw data collected  
in 2021

**1 BILLION**  
images streamed  
per month

**1500+**  
CPU cores

**100 GB**  
network  
speed

**12 PB**  
networking  
storage

## PRODUCTION

**9+ MILLION**  
square miles of data  
processed since 2014



## PARTNERS



**32**  
authorized  
resellers



**5+**  
acquisition  
partners



**7**  
processing  
teams



**HxGN** LIVE Global

# Partner Ecosystem



# 60%

of the HxGN Content Program  
is captured by trusted **Partners**.



# 75%

of the HxGN Content Program  
data is sold by **Resellers**.

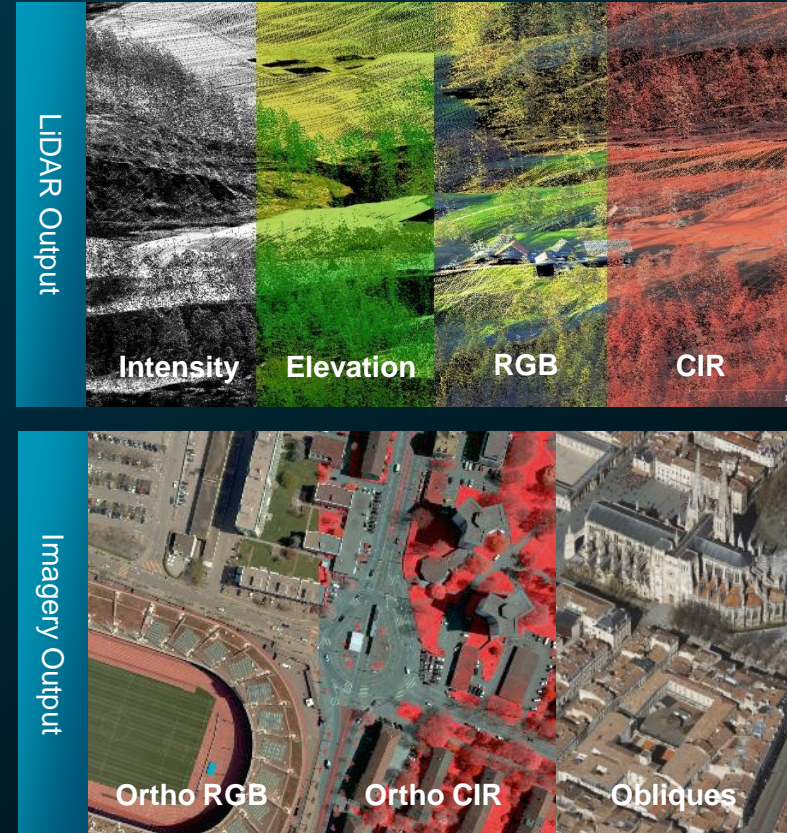
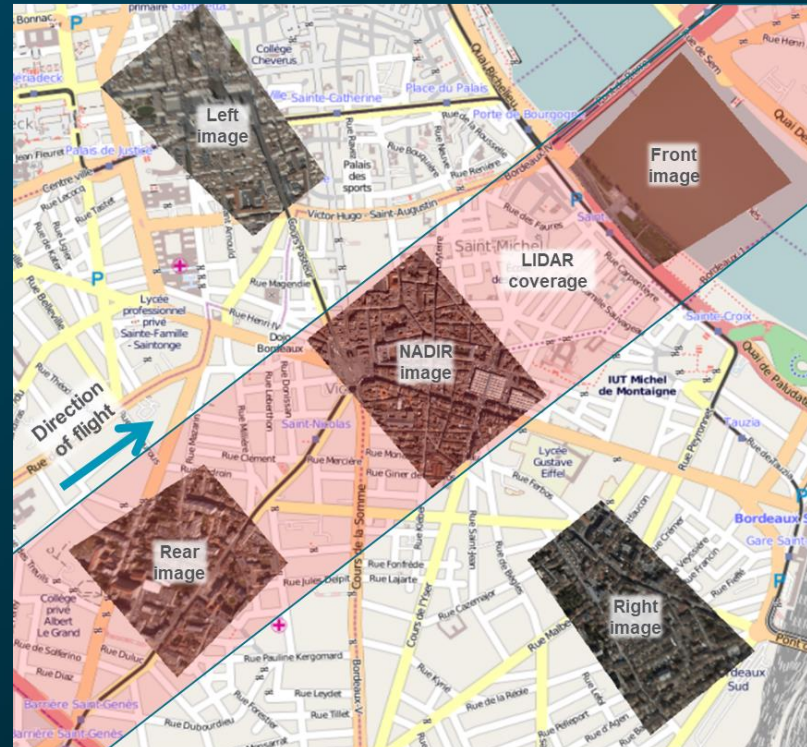


# Elevating the Imagery Market to New Heights

Hexagon Geospatial Content Solutions (GCS): Leica CityMapper-2



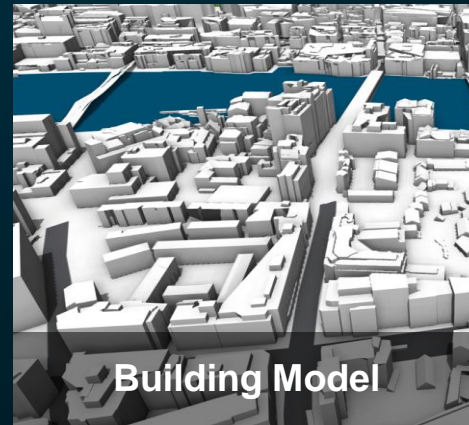
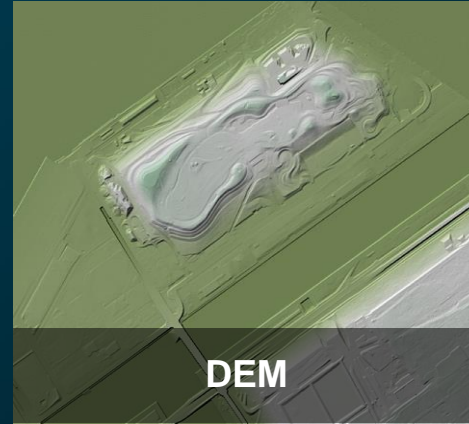
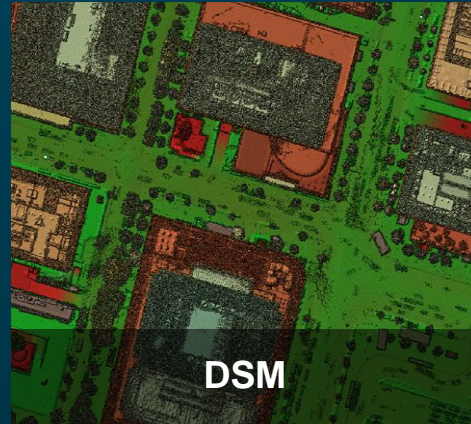
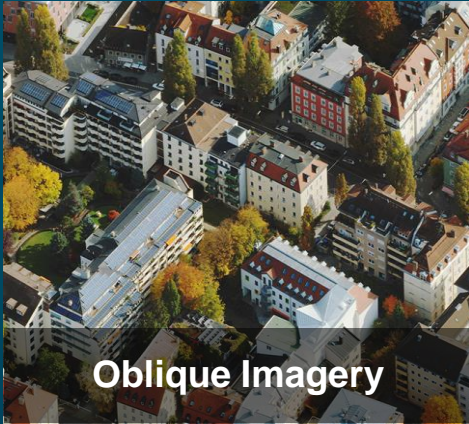
Leica CityMapper-2





# Elevating the Imagery Market to New Heights

Hexagon Geospatial Content Solutions (GCS) – Metro HD Derived Data Products





# Metro HD Data Visualizations

Data Derivatives





# Metro HD Data Visualizations

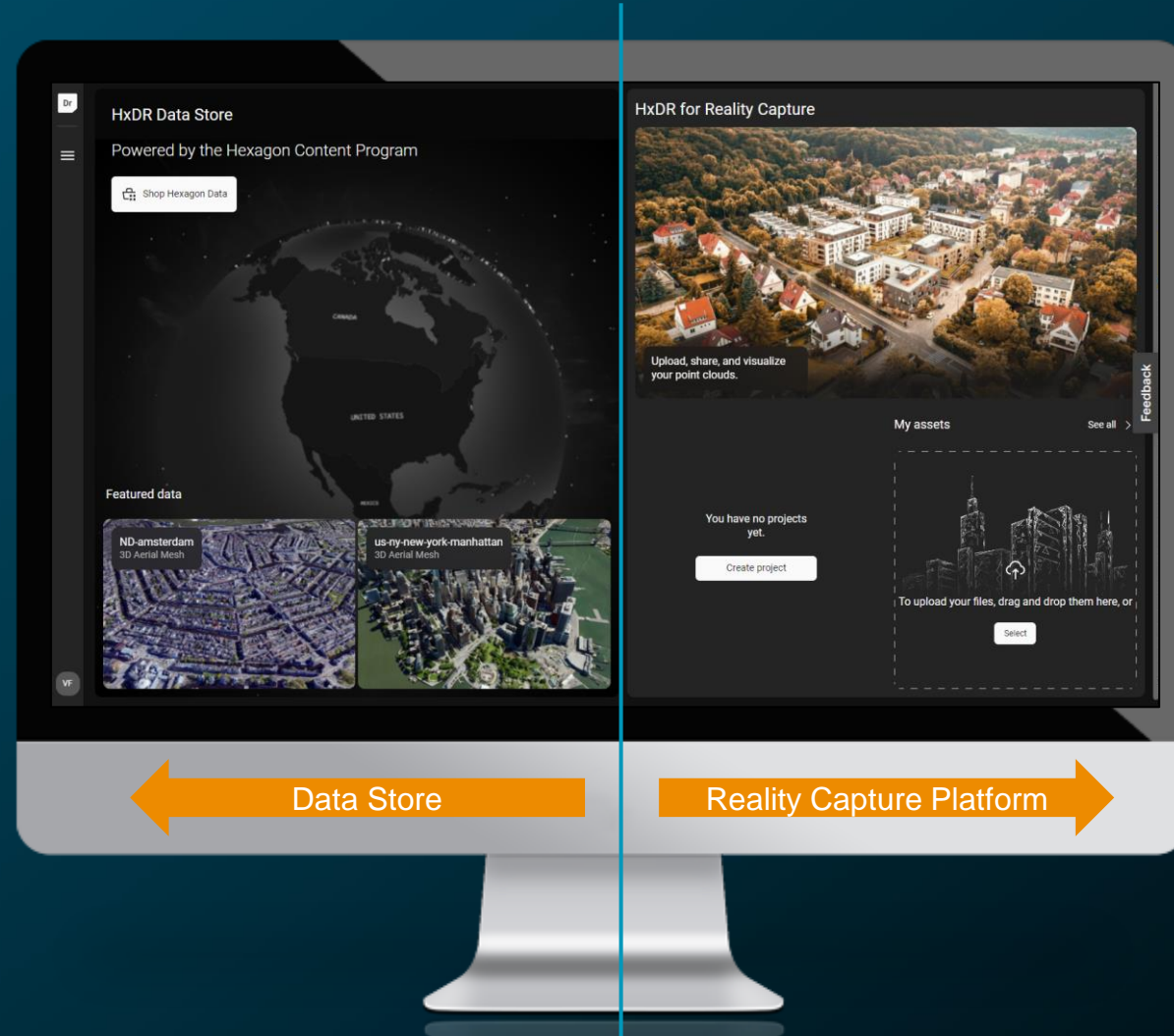
## Supermesh Perspective





# Hexagon Digital Reality (HxDR)

Hexagon Content and HxDR – New data store coming online



# Success factors PPP

Success of a PPP is determined by

- Legal and regulatory framework
- Stability of the legal environment
- Attitude of the stakeholders
- Public acceptance
- Quality of the service provided
- Trustful relationship between the Private and the Public entities
- Transparency from day 1
- Clear division of tasks and responsibilities

# Dr. Simon Musäus

VP Business Development

Geospatial Content Solutions

Hexagon Geosystems

simon.musaeus@hexagon.com

Tel: (+34) 63 32 907 62

Tel: (+1) (619) 626 9759

See me on [LinkedIn](#)